

The



Press

January, 2006

Founded and Chartered August 18, 1971

Volume 36, Issue 1

News items and editorial comments in this publication do not necessarily reflect the views and opinions of the Boeing Company

What's Happening?

BEWBC January Wine Meeting
Thursday January 26th at 7:00 pm – Kent Memorial Hall

Table of Contents

2	<u>President's Corner</u>
3	<u>Wine Program</u>
5	<u>Announcements</u>
6	<u>Calendar Of Events</u>
7	<u>Executive Board</u>

Susan Harshfield
Joe Sikora, Mark
Emiley & Paul Guilford
Doug Buffet

The Press is now available online at: <http://www.geocities.com/NapaValley/3528/press/pcurr.pdf>

President's Corner...

This will be my 23rd and last President's Corner. In February you'll be hearing from our new President. The slate of nominees for 2006 is as follows:

President – Mark Emiley
Vice President of Wine – Paul Guilford
Vice President of Beer – Doug Buffett
Secretary – Dean Sprayberry
Treasurer – Art Schnieder

We will ask for additional nominations and hold a vote at the January meeting.

As we start the new year, there are a lot of issues for the club to address – in particular the policy change at the Recreation Center that has us looking for a new meeting venue and responding to the results of the member survey. There is hard work before us on the parts of both the board and the membership. The club needs involvement and input from everyone – it won't thrive or even survive on the backs of just a few involved members. If you are someone whose only association with the club is an order of grapes every year, you might think about how else you can contribute. Could you volunteer some time to clean and move equipment before or after the crush? Could you help organize a meeting? Could you make your home available for an event like Wine Fest or the Holiday Social? Could you become the Equipment Chairperson or the Beer or Wine Activities Chairperson? Even submitting an article for The Press is a big help.

With an active, involved membership, I know this next year will be a great one. Without the involvement of our members the club will struggle. Let's choose success.

Susan Harshfield

206-284-7780

deh2418@foxinternet.net

Education

Brewing Tip:

Wort Loss

If you are frustrated with losing wort with your or leaf pellets at the end of the boil, consider putting your hops in a muslin or nylon bag. Though you will not get as great of an exposure to the wort for bitterness extraction, this can be made up for by adding an extra half to full ounce to the bag. If the beer lost is worth the extra fifty cents for additional hops, this is a good trade. At the end of the boil, just pull out the bag (carefully), give it a squeeze (preferably with tongs), and your wort is leaf free with minimal loss.

Mark Emiley

January Membership Meeting:

BEWBC January Wine Meeting

Thursday January 26th at 7:00 pm – **Kent Memorial Hall**

- Syrahs of The World Tasting & Winemaking Discussion -

Our meeting this month – Thursday, **January 26th**, usual time at **A SPECIAL LOCATION** (see below) – will be tasting of:

SYRAH! THE GLOBE TROTTING RED International Man of Mystery? ... or Lady of Intrigue?

We'll sample and discuss the different styles of Syrahs from Australia, France (Rhone region) and the United States (possibly S. Africa, too) – including some from our own vineyard sources. We'll look at the stylistic differences of these Syrahs, including how they are influenced by the use of oak, and blending with other varietals (like Grenache or Cabernet Sauvignon) or co-fermenting with other varietals (like Viognier). AND, more importantly, the goal is to have an interactive discussion on Syrah winemaking tips and techniques.

If you would like to share a bottle of Syrah that you have made, please bring it to the meeting.

Also – at the meeting, elections for 2006 BEWBC Board Officers will be held.

See you then!

NOTE THAT THIS IS NOT THE USUAL 3RD THURSDAY OF THE MONTH MEETING TIME – IT IS THE LAST THURSDAY OF THE MONTH

THE LOCATION FOR THE MEETING IS AT:

Kent Memorial Park Building

850 Central Ave N

Kent, WA 98032

See the map on the following page or the website listed below for directions to the hall.

<http://www.ci.kent.wa.us/kentcommons/rooms/KMPBuilding.asp>

Thanks,

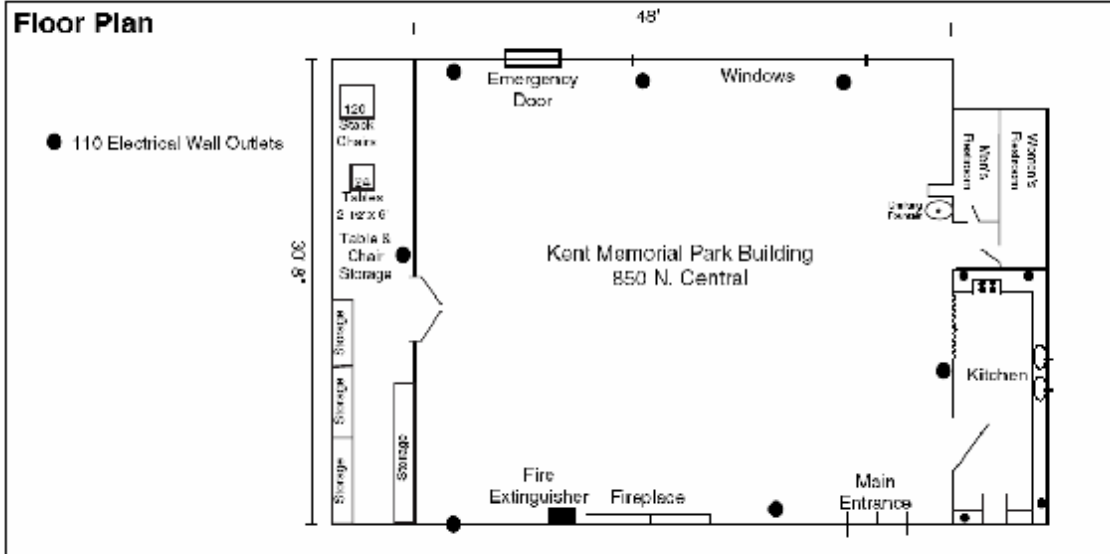
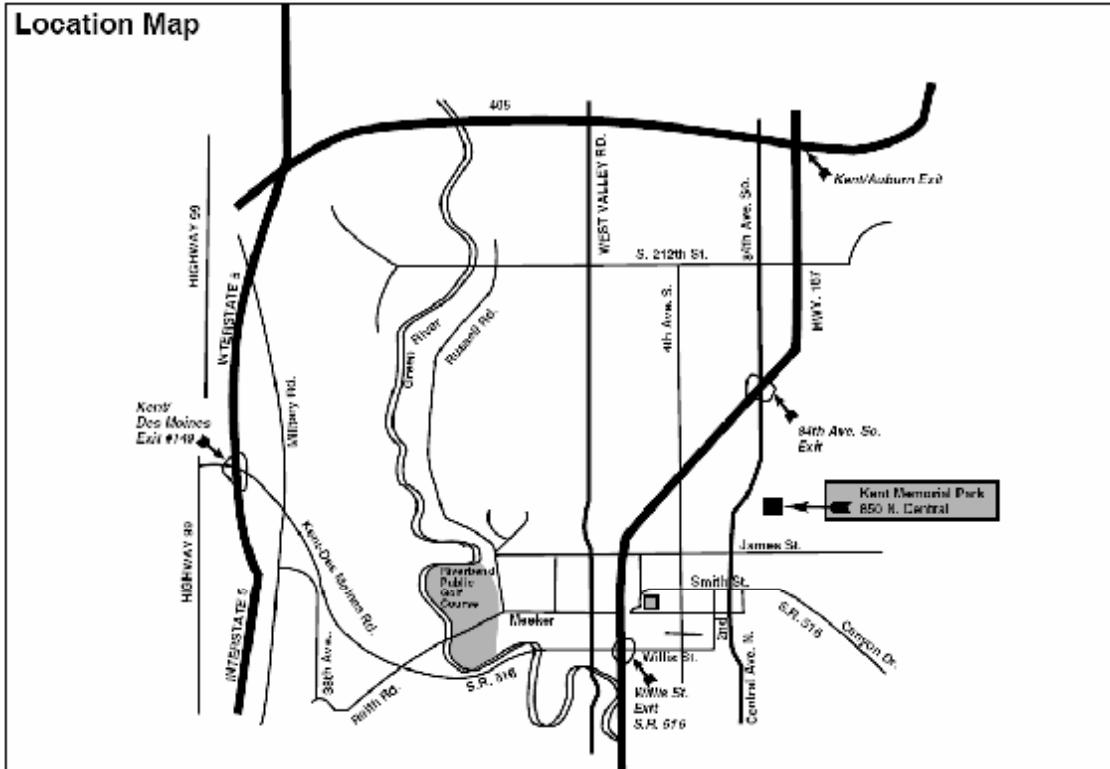
Joe Sikora , Mark Emiley & Paul Guilford

Joe.sikora@boeing.com

paul.a.guilford@boeing.com



KENT PARKS, RECREATION AND COMMUNITY SERVICES
 625 Fourth Avenue North • Kent, Washington 98032-4497
 Phone: (253)856-5000 • Fax: (253)856-6000 • Website: www.ci.kent.wa.us/kentcommons/
KENT MEMORIAL PARK • 850 N. CENTRAL • KENT, WA 98032



11/17/2016 • 4:10

Announcements



Hops & Props: An Elegant Craft Beer Tasting Experience

Saturday, Feb. 11, 2006, 7-10 p.m.

Nearly fifty craft breweries from eight states and five countries will converge on The Museum of Flight in Seattle to share their specialties. Catering by McCormick & Schmick's will provide the wonderful food and guests will also enjoy live music by Northwest band BD & the Rockits. The event includes unlimited tastes, delicious hors d'oeuvres, a tasting guide, a commemorative tasting glass, free parking and access to the Museum's Great Gallery for an evening of amazing aviation history. General event tickets are (normally) \$50 in advance (see above) and \$60 at the door. At 5:30 p.m., a special VIP experience is also available for those who would enjoy a 90-minute exclusive tasting with experts from three premier breweries, commentary by renowned beer critic Don Scheidt and all general event ticket benefits for \$75. VIP ticket numbers are limited. For more information, visit <http://www.museumofflight.org/hopsandprops> or <http://tinyurl.com/bcv3a>.

Participating breweries for the general event:

Alaskan Brewing Co., Juneau, Alaska
Anderson Valley Brewing, Boonville, Calif.
Aspall, Suffolk, England
Ayinger Brewery, Aying, Germany
Baron Brewing Co., Seattle, Wash.
Big Sky Brewing Co., Missoula, Mont.
Boundary Bay Brewery, Bellingham, Wash
BridgePort Brewing Co., Portland, Ore.
Charles Wells Brewery, Bedford, England
De Proefbrouwerij, Lochristi, Belgium
Deschutes Brewing Co., Bend, Ore.
Diamond Knot Brewery, Mukilteo, Wash.
Dogfish Head Craft Brewery, Milton, Del.
Duvel Moortgat, Purrs, Belgium
Elysian Brewing Co., Seattle, Wash.
Fish Brewing Co., Olympia, Wash.
Flying Dog Brewing Company, Denver, Colo.
Full Sail Brewing Co., Hood River, Ore.
Georgetown Brewing Co., Seattle, Wash.
Hale's Ales, Seattle, Wash.
Hoegaarden, Brussels, Belgium
Kona Brewing Co., Kona, Hawaii
Lagunitas Brewing Co., Petaluma, Calif.
Lindemans Farm Brewery, Vlezenbeek, Belgium

Mac and Jack's Brewing Co., Redmond, Wash.
Melbourn Brothers Brewery, Stamford, England
Mendocino Brewing Co., Hopland, Calif.
New Belgium Brewing Co., Fort Collins, Colo.
North Coast Brewing Co., Fort Bragg, Calif.
Orval Trappist Brewery, Florenville, Belgium
Oskar Blues Brewing Co., Lyons, Colo.
Pacific Crest Brewing Co., Tukwila, Wash. (just south of the museum!)

Pike Brewing Co., Seattle, Wash.
Pinkus Brewery, Münster, Germany
Redhook Ale Brewery, Woodinville, Wash.
Rochefort Trappist Brewery, Rochefort, Belgium
Rogue Ales, Newport, Ore.
Samuel Smith's Old Brewery, Tadcaster, England
Scuttlebutt Brewing Co., Everett, Wash.
Skagit River Brewery, Mount Vernon, Wash.
Sleeman Brewing, Guelph, Ontario, Canada
Snoqualmie Falls Brewing Co., Snoqualmie, Wash.
Stone Brewing Co., San Marcos, Calif.
Traquair House Brewery, Peeblesshire, Scotland
Westmalle Trappist Brewery, Westmalle, Belgium
Widmer Brothers Brewery, Portland, Ore.
Young and Co's Brewing, London, England

Participating breweries for the VIP event:

Aspall, Suffolk, England
Aventinus, Bavaria, Germany
Ayinger Brewery, Aying, Germany
Charles Wells Brewery, Bedford, England
De Proefbrouwerij, Lochristi, Belgium

Diebles, Düsseldorf, Germany
Edelweiss Brewery, Alpine, Texas
Melbourn Brothers Brewery, Stamford, England
Pinkus Brewery, Münster, Germany
Samuel Smith's Old Brewery, Tadcaster, England

It's that time of year again, and any of you interested can reply to me for tickets at the \$42.50 group rate. It is a really nice event, and a good opportunity to talk to the brewers in some instances. If you are interested in a VIP ticket, I'll have to find out if there is a discount for that. Let me know. I hope to go in the next week or so and get the tickets, and I can then mail or drop off as convenient.

Doug Buffet

BEWBC Calendar					
(Changes are <u>UNDERLINED</u>)					
	Date	Activity	Event or Planned Meeting Program	Website	Contact
Jan	<u>26</u>	<u>WINE Program</u>	<u>Syrahs of the World, Kent Memorial Hall in Kent 850 N. Central</u>	<u>Click for map</u>	<u>Joe, Mark, Paul</u>
Feb	<u>16</u>	<u>BEER Program</u>	<u>Rendezvous at the new Ram brewery in Kent</u>	<u>http://theram.com/wa-kent.php</u>	<u>Doug Buffett</u>
	8 - 10	Wine Event	WAWGG Conference in Yakima	www.wawgg.org/	509-782-8234
	9 - 12,14	Wine Event	E.B. Foote Winery - Wine and Chocolate	www.ebfootewinery.com	206-242-3852
	Sat 11	Beer Event	Museum of Flight Hops & Props	www.museumofflight.org/hopsandprops	206-769-9463
		Beer Event	10th Elysian Winter Beer Fest	www.elysianbrewing.com	206-860-1920
Mar	<u>16</u>	<u>WINE Program</u>			
	4 - 6	Beer Event	St. Patrick's Cascadia Cup Competition	www.cascadebrewersguild.org	
	4	Wine Event	Phinney Assn. Wine Tasting	www.phinneycenter.org/events.shtml	206-783-2244
	24, 25	Beer Event	Hops on Equinox Spring Beer Beer Festival	www.washingtonbrewfest.com/spring/index.php	206-633-0422
	25	Beer Event	Homebrew Fair	www.homebrewfair.com	
Apr	<u>20</u>	<u>BEER Program</u>			
	1	Wine Event	Tim Narby's Nota Bene Release Party	www.notabenevellers.com	206-459-2785
	8	Wine Event	Taste Washington' @ Stadium Exhibition Center	www.tastewashington.org/	206-667-9463
	10 - 11	Beer Event	World Beer Cup 2006 - Wa State Conv. Center	http://www.beertown.org/events/wbc/	
	11 - 14	Beer Event	Craft Brewers Conference - Wa State Conv. Center	http://www.beertown.org/events/cbc/	
May	<u>18</u>	<u>WINE Program</u>			
		Beer Event	National Homebrew Day	www.beertown.com/events/bigbrew/	
	4 - 7	Wine Event	Spring Barrel Tasting at E.B. Foote Winery	www.ebfootewinery.com	206-242-3852
June	<u>15</u>	<u>BEER Program</u>			
	11	Wine Event	Taste Washington - Spokane	www.tastewashington.org/	206-667-9463
	16 - 18	Beer Event	Wa. Brewers Guild Father's Day Brewfest	www.washingtonbrewfest.com/summer/	206-633-0422
July			American Beer Month	www.americanbeermonth.com/	
		WINE Program	WineFest Preliminaries		
		Club Event	WineFest finals & potluck		
		Beer Event	Seattle International Beerfest	www.seattlebeerfest.com	
	28 - 30	Beer Event	Oregon Brewer's Fest Portland's Waterfront	www.oregonbrewfest.com/	
		Beer Event	Puyallup Fair Entry acceptance	www.thefair.com/InfoServices/EntryInfo/pdf/05_AG.pdf	
Aug			Washington Wine Month	www.washingtonwine.org/	
		Club Event	Summer Social in Kent		
		FYI	Evergreen State Fair acceptance	esfcompetition.homestead.com/home.html	425-879-6225
		FYI	Puyallup Fair Entry judging	www.thefair.com/InfoServices/EntryInfo/pdf/05_AG.pdf	
	10 - 13	Wine Event	Summer Celebration at E.B. Foote	www.ebfootewinery.com	206-242-3852
		Beer Event	Yakimania-Road trip & campout @ HopUnion		800-952-4873
Sept	<u>1 - 31</u>	<u>Wine Event</u>	<u>No meeting-Just grape pickin', deliverin' & CRUSHIN'!!</u>		<u>You</u>
	8 - 9	Beer Event	Great Canadian Beer Festival - Victoria	www.qcbf.com/	250-383-2332
		Beer Event	7th Annual Fremont Oktoberfest	www.fremontoktoberfest.com/	
		Beer Event	Great American Beer Fest in Denver	www.beertown.org/events/	
Okt	<u>19</u>	<u>BEER Program</u>			
		Wine Event	Sons of Italy - Our Lady of Mt. Virgin Parish hall		
		Beer Event	Cask Beer Fest at the Seattle Center	www.washingtonbrewfest.com/	206-633-0422
Nov	<u>16</u>	<u>WINE Program</u>			
		Beer Event	Teach A Friend To Homebrew Day	www.beertown.org/events/teach/	
		Beer Event	Phinney Assn. Beer Tasting	www.phinneycenter.org/events.shtml	206-783-2244
Dec		<u>Club Event</u>	<u>Combined Annual Holiday Social</u>	<u>\Fil-nw01-10\BEWBC\Social Events\Winter Social\Holiday_2005.pdf</u>	<u>Dave Albano</u>
	11/30-3	Wine Event	11th annual E.B. Foote Winery -Open House	www.ebfootewinery.com	206-242-3852

BEWBC Executive Board 2006

Executive Board	Name	Work Phone	E-Mail	M/S	Alternate Phone
President	Susan Harshfield		deh2418 (at) foxinternet.net	-	206-284-7780
VP – Wine	Paul Guilford	425-266-4724	paul.a.guilford (at) boeing.com	0Y-51	-
VP - Beer	John Falkowski	206-544-9844	john.a.falkowski (at) boeing.com	2L-24	253-922-5084
Treasurer	Dave Albano	425-717-5871	david.j.albano (at) boeing.com	02-58	360-653-1584
Secretary	Joe Sikora	425-294-4352	joe.sikora (at) boeing.com	02-59	206-523-1321
Activities Committee					
* Wine Activities	OPEN				-
Beer Activities	Mark Emiley	206-544-2808	Mark.Emiley (at) boeing.com	45-14	253-941-0635
* Wine Education	OPEN				
Beer Education	Jim Papson	253-657-1041	james.m.papson (at) boeing.com	8M-97	360-802-0168
Meeting Administration	John Falkowski	206-766-4246	john.a.falkowski (at) boeing.com	<u>2L-87</u>	253-922-5084
Retirees	Doug De Vol	-	-	-	206-937-0717
Grape Procurement Committee					
Coordinator	Dave Albano	425-717-5871	david.j.albano (at) boeing.com	03-96	360-653-1584
Supplies and Equipment Committee					
Club Store	Jack Randles	-	-	-	206-463-9351
Club Store	John Seeley	-			206-244-5045
Library	David Buhr	<u>425-234-1797</u>	david.f.buhr (at) boeing.com		206-290-3580
* Equipment					
* Equipment Assistant					
Membership Committee					
Membership	Al Cutshall	206-655-2474	alden.d.cutshall (at) boeing.com	42-73	425-390-1254
Publications Committee					
PR/Communications	Anne Brown	206-544-3081	Anne.M.Brown (at) boeing.com	1F-66	
PR/Communications	Anne Gose	425-865-5675	anne.e.gose (at) boeing.com	7A-16	
Editor – The Press	David Hauck	206-766-3839	david.p.hauck (at) boeing.com	2J-53	425-226-0151
Assistant Editor	Doug Buffett	206-655-1659	makebrew (at) comcast.net	49-35	206-769-WINE
Webmaster	Al Cutshall	206-655-2474	alden.d.cutshall (at) boeing.com	42-73	425-390-1254
Photography	Doug Buffett	206-655-1659	makebrew (at) comcast.net	49-35	206-769-WINE
F . Y . I .	Programs:	3rd Thursday of most months, 7:00 p.m. See Club Calendar for details. Kent Rec. Center 22649 83rd Ave.S. Call President for front door cipher combo.			
	Dues & Address Changes:	Full time employee/contractor \$25, Retirees \$16. Pro-rated quarterly. Payable to BEWBC by March 31. Send dues and address/mailstop changes to Al Cutshall, 42-73.			
	Newsletter:	Distributed the first week of each month. Ads and article submissions welcome. Send to David Hauck. Deadline is the 25 th of the prior month.			
	Store/Library:	Open 3 rd Thursdays of each month (Program nights only), 5:30 - 6:30 pm. 1 st Thursday of each month by appointment only. Contact store manager.			
	Equipment:	Items for checkout issued by store manager.			
	Club Website:	http://www.geocities.com/NapaValley/3528/			
	Everett Club (BEEWBC):	http://www.fortunecity.com/littleitaly/livorno/829/index.htm			
	Affiliations:	American Homebrewers Association (AHA) Washington Association of Wine Grape Growers (WAWGG) Western Washington Amateur Winemakers Association (WWAWA)			
	Recreation Advisor:	Ron Anderson, 425-342-8369, 0F-KA			